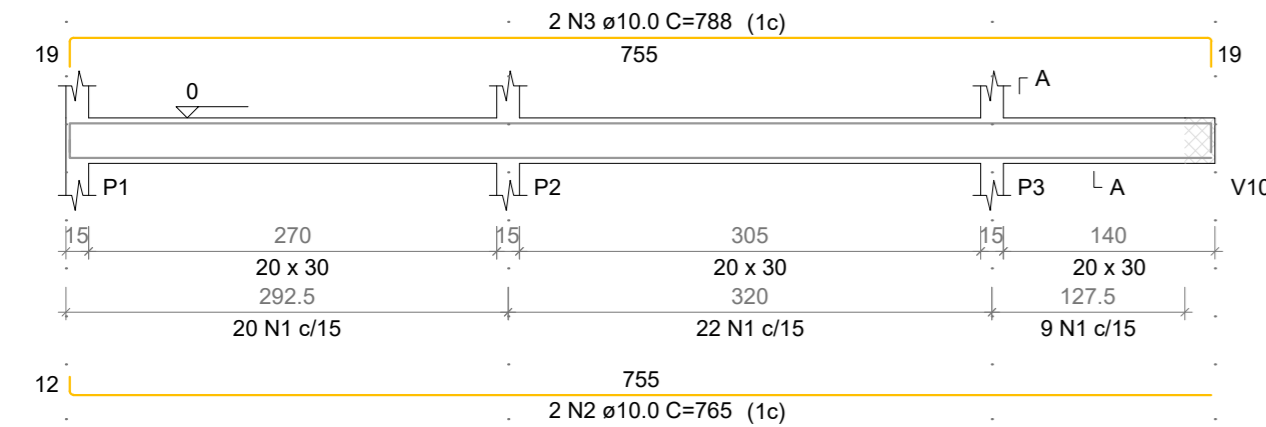


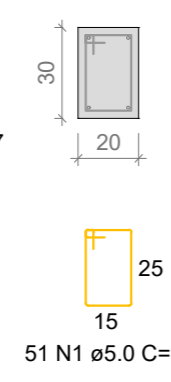
### V101

ESC 1:50



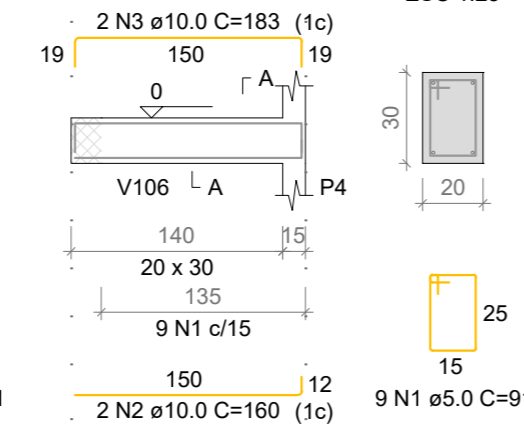
### SEÇÃO A-A

ESC 1:25



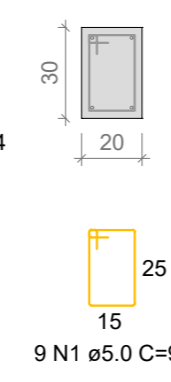
### V102

ESC 1:50



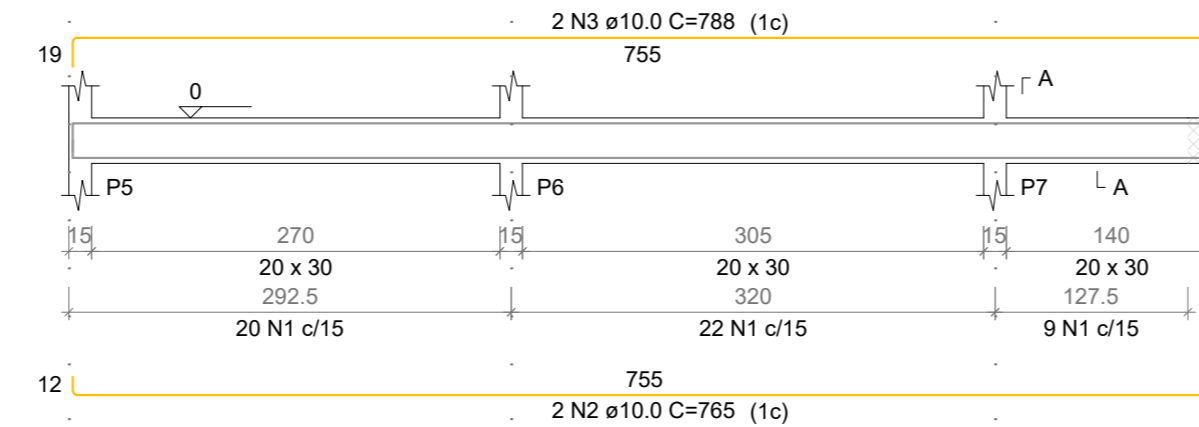
### SEÇÃO A-A

ESC 1:25



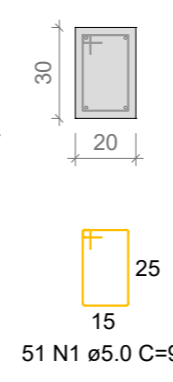
### V103

ESC 1:50



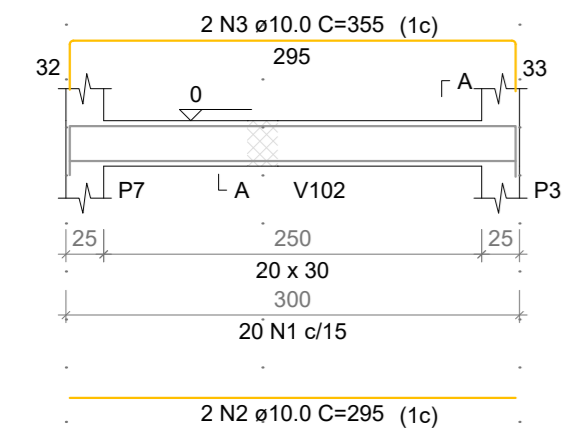
### SEÇÃO A-A

ESC 1:25



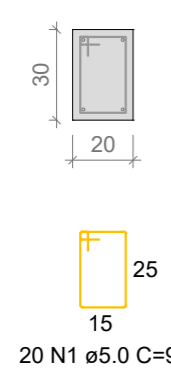
### V106

ESC 1:50



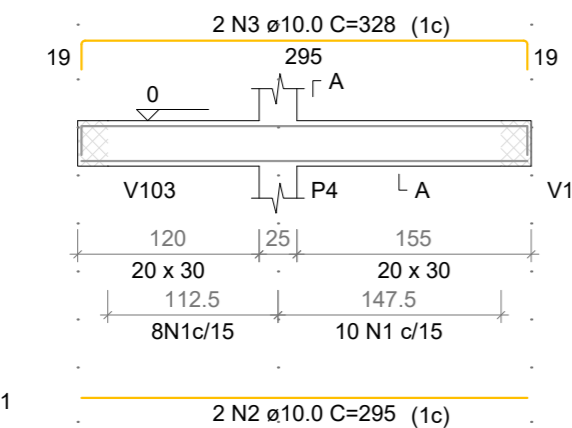
### SEÇÃO A-A

ESC 1:25



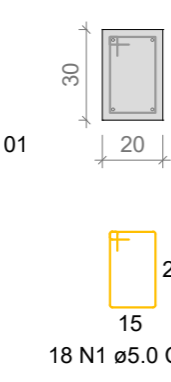
### V107

ESC 1:50



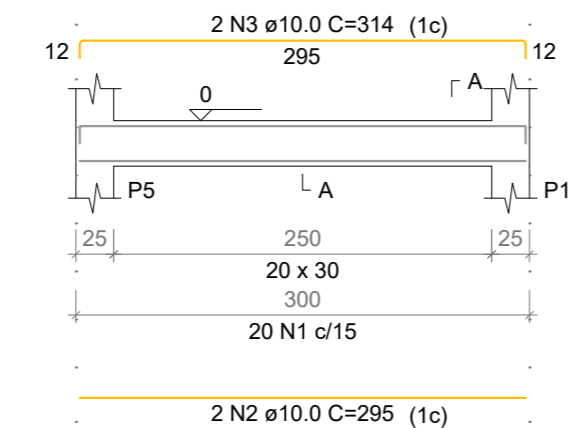
### SEÇÃO A-A

ESC 1:25



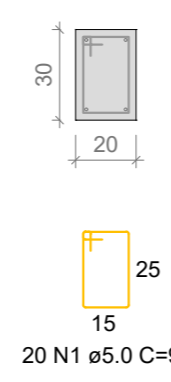
### V104

ESC 1:50



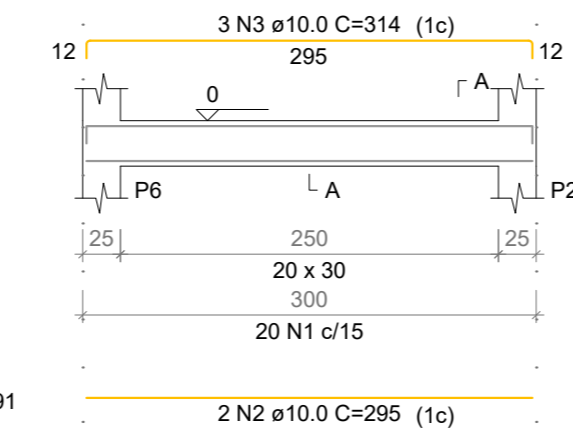
### SEÇÃO A-A

ESC 1:25



### V105

ESC 1:50



### SEÇÃO A-A

ESC 1:25



### RELAÇÃO DO AÇO

ELEMENTO	AÇO	N	DIAM (mm)	QUANT	C.UNIT (cm)	C.TOTAL (cm)
V101	CA60	1	5.0	51	91	4641
	CA50	2	10.0	2	765	1530
	CA50	3	10.0	2	788	1576
V102	CA60	1	5.0	9	91	819
	CA50	2	10.0	2	183	366
	CA50	3	10.0	2	183	366
V103	CA60	1	5.0	51	91	4641
	CA50	2	10.0	2	765	1530
	CA50	3	10.0	2	788	1576
V104	CA60	1	5.0	20	91	1820
	CA50	2	10.0	2	295	590
	CA50	3	10.0	2	314	628
V105	CA60	1	5.0	20	91	1820
	CA50	2	10.0	2	295	590
	CA50	3	10.0	3	314	942
V106	CA60	1	5.0	20	91	1820
	CA50	2	10.0	2	295	590
	CA50	3	10.0	2	355	710
V107	CA60	1	5.0	18	91	1638
	CA50	2	10.0	2	295	590
	CA50	3	10.0	2	328	656

### RESUMO DO AÇO

AÇO	DIAM (mm)	C.TOTAL (m)	PESO + 10% (kg)
CA50	10.0	121.9	82.7
CA60	5.0	172	29.2
PESO TOTAL (kg)			
CA50		82.7	
CA60		29.2	

Volume de concreto (C-30) = 1.63 m³  
 Área de forma = 21.76 m²



### PREFEITURA MUNICIPAL DE IPIUINA

RUA JOÃO ROBERTO DA SILVA, Nº 40  
 BAIRRO CENTRO  
 IPIUINA - MG  
 TELEFONE: (35) 3732 1131

ENDEREÇO:  
 RUA PRAÇA MARIA CANDIDA FRANCO  
 BAIRRO - CENTRO  
 IPIUINA - MG

OBRA: AMPLIAÇÃO DE CONSTRUÇÃO EM ALVENARIA  
 REFERENCIA: PROJETO ESTRUTURAL - CONSTRUÇÃO VIGAS V100

PROPRIETÁRIO: **PREFEITURA MUNICIPAL DE IPIUINA**

ASS. PROPRIETÁRIO  
 THIAGO ZUCCON E SILVA - CREA 89993/D

DESENHISTA: XXXXX  
 ÁREA TOTAL DO TERRENO: 1.403M²  
 ÁREA EXISTENTE: 611.37M²  
 ÁREA A CONSTRUIR: 22.75M²  
 ESCALAS: INDICADAS  
 DATA: MAIO 2024

PRANCHA: 04/15